



# ILCSWMA Membership Application

Organization: \_\_\_\_\_

Name: \_\_\_\_\_

Title: \_\_\_\_\_

Address: \_\_\_\_\_

City/State/Zip: \_\_\_\_\_

Phone: \_\_\_\_\_

Fax: \_\_\_\_\_

Email: \_\_\_\_\_

## Membership Category

\_\_\_ Full Membership: \$100.00

\_\_\_ Affiliate Membership: \$75.00

\_\_\_ New Member Rate for 2019: \$50.00 (must not have been a member for the past five years or more)

## Payment Options

\_\_\_ Check Enclosed; payable to "ILCSWMA".

\_\_\_ Credit Card; mail in form and a secure PayPal link will be emailed to you

Mail completed form with payment to:

ILCSWMA

PO Box 112

Murphysboro, IL 62966

Membership is valid from January 1 to December 31 each year. **All employees** of your organization are covered under one membership.

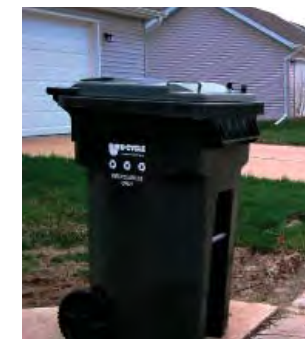
Printed on recycled content paper

*If necessary, please route to others in organization such as Recycling Coordinator, Public Works Director, Sanitation Manager, Environmental Health Director, Planning Director, Education Coordinator, or State's Attorney.*

**Illinois Counties Solid Waste Management Association**  
PO Box 112  
Murphysboro, IL 62966  
ilcswma.org



# Promoting Sustainable Solid Waste Management Choices by Illinois Communities



# Promoting Sustainable Solid Waste Management Choices

## Why Join?

### Top 10 Reasons to Join ILCSWMA

- 1 All employees are covered under one membership
- 2 Annual Conference – a not to miss conference, Oct. 31 & Nov. 1, Wyndham, Springfield
- 3 Bi-monthly newsletter - the “beat” of State solid waste
- 4 Networking opportunities
- 5 Regional meetings that focus on timely topics
- 6 Leading the way to Product Stewardship in Illinois
- 7 Training and seminars featuring industry specialists
- 8 Support from other professionals
- 9 Legislative Updates keep you informed
- 10 A fun group of industry professionals



## What is ILCSWMA?

The Illinois Counties Solid Waste Management Association (ILCSWMA) was established in 1993 as a not-for-profit organization for local level solid waste management officials and other interested parties. The Association is dedicated to providing a forum for networking, training and information exchange.

The areas of solid waste covered include:

- Collection
- Processing & Disposal
- Recycling and Waste Prevention
- Regulation & Enforcement
- Information & Education

ILCSWMA is proud to serve over 80 member organizations throughout the State. It is the Board’s goal to provide quality programs and keep the membership fee affordable.

## ILCSWMA Board of Directors 2018-19

Marlin Hartman, President – Kendall County

Kerri Gale, Vice President – Jackson County

Becky Tracy, Treasurer – Perry County

Jennifer Jarland, Secretary – Kane County

Pete Adrian, Northern Region Rep – SWALCO

Chad Braatz, Central Region Rep – City of Monmouth

Kim Petzing, Southern Region Rep – Madison County

Evelyn Neavear, At-Large Member – Tazewell County

Doug Toole, At-Large Member – Vermilion County

## ILCSWMA Membership

The following organizations can become a **Full Member for \$100** and are entitled to vote, attend all programs and conferences at discounted rates, receive the newsletter and informational emails, and have access to the membership mailing list:

- Counties (solid waste agencies, health & planning departments, county boards, State’s Attorneys)
- Municipalities (elected officials, sanitation managers, public works departments)
- Regional Planning Commissions
- Townships

The following organizations can become an **Affiliate Member for \$75** that includes reduced-fee attendance at programs and conferences, receive the newsletter and informational emails, as well as the ability to advertise in the newsletter and gain access to the membership mailing list for promotional purposes:

- State agencies and organizations
- Consulting and Engineering firms
- Colleges and Universities
- Keep Illinois Beautiful affiliates
- Private Companies
- Community groups

*A forum for networking, training and information exchange.*

