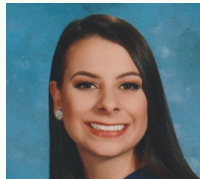


A Review and Updates to the Illinois Consumer Electronics Recycling Act

- ▶ Welcome to the Webinar – The Webinar will begin shortly.
- ▶ Your computer or phone will be in listen only mode for the entire program.
- ▶ Please feel free to send questions during the program.
- ▶ We will do our best to answer questions at the end of the program and will publish a list of questions and answers from the program on the www.ilcswma.org web site.
- ▶ A link to a recording of this program will be sent to you following its conclusion and will also be available on the ILCSWMA web site.



A Review and Updates to the Illinois Consumer Electronics Recycling Act



Jessica Miller, Waste Reduction and Compliance
Illinois Environmental Protection Agency



Jason Linnell, Executive Director
National Center for Electronics Recycling



Kerri Gale, Jackson County Health Department
ILCSWMA President



Pete Adrian, Solid Waste Agency of lake County
ILCSWMA Vice President

What is ILCSWMA?

- The Illinois Counties Solid Waste Management Association is a professional association of local level solid waste professionals throughout the state of Illinois.
- ILCSWMA represents areas of solid waste, including waste collection, process & disposing, recycling & waste prevention, regulation & enforcement, information & education.
- ILCSWMA provides our members with legislative updates, regional meetings, quarterly newsletters and an annual conference (October 29 – 30, 2020 at beautiful Starved Rock State Park).
- To learn more visit our website www.ilcswma.org

Are you a ILCSWMA member?

Now is the best time to join!

- We are offering a new members a rate of \$50. If your organization (full or affiliate) has not been a member for at least the past three years, you are also eligible to join for this reduced rate.
- Full Membership is regularly \$100 Annually
 - (County, municipal, or township units of government and regional planning commissions)
- Affiliate Membership is regularly \$75 Annually
 - (State agencies and organizations, consulting firms, colleges & universities, Keep Illinois Beautiful affiliates, service providers, community groups)
- Membership is valid from January 1 to December 31 each year.
- Membership belongs to organizations, not individuals. All employees of member organizations are eligible for discounted conference rates and more.
- You won't find a better value out there than ILCSWMA membership!
- To join, please visit our website at www.ilcswma.org

Additional Questions and Answers: Contact your ILCSWMA Region Representative

- ▶ Southern Rep: Andrea Yancey - anyancey@co.madison.il.us

(Counties covered: Alexander, Bond, Calhoun, Clay, Clinton, Crawford, Edwards, Effingham, Fayette, Franklin, Gallatin, Greene, Hamilton, Hardin, Jackson, Jasper, Jefferson, Jersey, Johnson, Lawrence, Macoupin, Madison, Marion, Massac, Monroe, Montgomery, Perry, Pope, Pulaski, Randolph, Richland, Saline, St. Clair, Union, Wabash, Washington, Wayne, White and Williamson)

- ▶ Central Rep: Chad Braatz - chad.braatz@cityofmonmouth.com

(Counties covered: Adams, Brown, Cass, Champaign, Christian, Clark, Coles, Cumberland, DeWitt, Douglas, Edgar, Ford, Fulton, Hancock, Henderson, Henry, Iroquois, Knox, Livingston, Logan, Macon, Mason, McDonough, McLean, Menard, Mercer, Morgan, Moultrie, Peoria, Piatt, Pike, Rock Island, Sangamon, Schuyler, Scott, Shelby, Tazewell, Vermilion, Warren and Woodford)

- ▶ Northern Rep: Paul Cooney – pcooney@Oglecounty.org

(Counties covered: Bureau, Boone, Carroll, Cook, DeKalb, DuPage, Grundy, JoDaviess, Kankakee, Kane, Kendall, Lake, LaSalle, Lee, Marshall, McHenry, Ogle, Putnam, Stark, Stephenson, Whiteside, Will, and Winnebago)

- ▶ Kerri Gale – kerrig@jchdonline.org

- ▶ Or, send your questions to info@ilcswma.org

Questions and Answers: Continued

- ▶ Please fill out the brief survey that will pop up after we sign off today.
- ▶ Dialogue on this topic will continue at our regional meetings in February, so please join us.
- ▶ In the meantime please feel free to send questions to ILCSWMA via our regional representatives or at info@ilcswma.org
- ▶ We will do our best to answer your questions and publish them on the ilcswma.org web site as quickly as possible.
- ▶ A link to a recording of this program will be sent to you following its conclusion and will also be available on the ILCSWMA web site.
- ▶ If you are not an ILCSWMA member yet, please consider joining.
- ▶ Thank you for joining us today.