

Illinois Solid Waste News

Sep/Oct 2018

Volume 25 Issue 5



www.ilcswma.org

ILCSWMA BOARD

PRESIDENT

Marlin Hartman
Kendall County
630-553-9100
president@ilcswma.org

VICE PRESIDENT

Kerri Gale
Jackson County
618-684-3143, ext. 136
vp@ilcswma.org

SECRETARY

Jennifer Jarland
Kane County
630-208-3841
jarlandjennifer@co.kane.il.us

TREASURER

Becky Tracy
Perry County
618-357-3267
bckytracy@yahoo.com

NORTHERN REGION REPRESENTATIVE

Pete Adrian
Solid Waste Agency of
Lake County
847-377-4952
padrian@swalco.org

CENTRAL REGION REPRESENTATIVE

Chad Braatz
City of Monmouth
309-255-5076
chad.braatz@cityofmonmouth.com

SOUTHERN REGION REPRESENTATIVE

Kim Petzing
Madison County
618-296-4319
kspetzing@co.madison.il.us

AT-LARGE

Evelyn Neavear
Tazewell County
309-929-0250
eneavear@tchd.net

AT-LARGE

Doug Toole
Vermilion County
217-431-2662, ext. 243
dtoole@vchd.org



PRESIDENT'S MESSAGE

Dear Solid Waste Professionals,
The ILCSWMA Annual conference is right around the corner. Our conference at Starved Rock is always a highlight with the beauties of nature and the rich natural history the park. For those of you that don't typically venture very far from the hotel/conference center area allow me to give you some tips.

Down along the river, down the zig-zag hill is a small museum depicting the history of Starved Rock. Drive down, or hike if you dare, but take an hour to learn of the Starved Rock heritage. If you have done that museum tour, another small museum is right across the river to the north east, Lock and Dam #6. I believe the trolley gives rides to that site. At the Illinois Waterway Visitor Center is a complete history of the Illinois and Michigan Canal and does offer eagle watching, as well.

The Annual Conference will also allow for interaction between solid waste professionals from across the state and the Midwest.

The CERA legislation efforts are being monitored by other Midwest states, so much so we have seen an increase in out of

state requests for conference information. The Annual Conference will better prepare government organizations for this transition of electronic recycling systems in Illinois.



Our registration information is available on our [website](http://www.ilcswma.org). I can assure you there is no better deal for an educational, historical, social and darn fun event like the ILCSWMA conference. We will see you there on Halloween for "Costumes on the Rock" (see page 2 for details).

Until next time....

All my best, Marlin Hartman

ASSOCIATION NEWS

ELECTION RESULTS

Jennifer Jarland, ILCSWMA Secretary, recently confirmed the results of the recent Association elections. Elections were held for the regional representative positions on the ILCSWMA Board of Directors.

During even-numbered years, the regional reps are elected to a two year term. Pete Adrian was elected as the Northern rep, Chad Braatz as the central region rep, and Kim Petzing as the Southern region rep. Congratulations to all three and many thanks for their willingness to serve!

Please don't hesitate to contact your regional representative to the Board with any ideas, issues or concerns. Their contact info is on the front page of the newsletter.

26th ANNUAL CONFERENCE

If you have not registered for the ILCSWMA Annual Conference, to be held **November 1-2, 2018** at Starved Rock Lodge, please do so now. See the last four pages of this newsletter or the [website](#) for details.

The sessions have really shaped up nicely this year, with lots of great topics. Some highlights:

- Chinese National Sword impacts
- CERA Panel Discussion with reps from most of the Group Plan Administrators
- Updates on the Recycling Contamination Task Force
- Food Scrap Management
- Stop the Bleed training
- And much more!

COSTUMES ON THE ROCK

Since this year's annual conference starts on November 1, that means many of you will be at the conference hotel the prior evening, October 31. We have never needed an excuse to have some fun, but we could not pass up this opportunity! So ILCSWMA will be holding a Halloween Party, and you are all invited!

After checking into the hotel on October 31, all of our conference attendees are encouraged to dress up in costume and come down to the hotel's Back Door Lounge at 7pm. We will award prizes for First, Second and Third place in the costume contest. Participants in the contest can be in costume individually, or as part of a group.



WHAT: ILCSWMA Halloween Party

WHERE: Back Door Lounge at Starved Rock Lodge

WHEN: Wednesday, November 1st at 7pm

WHY: Why Not???

WHAT TO DO: Dress up in costume, individually or with a group. Keep the costume rated "PG or better".

PRIZES: Awarded for 1st, 2nd, and 3rd place

MEMBER NEWS

WILL COUNTY

The Will County ShareFest – Recyclepalooza is the County's largest collection and reuse event, serving over 1,000 households annually for more than 10 consecutive years. The event includes HHW, Electronics, Wood, Scrap Metal, Styrofoam, Clothing, Books, Toys, Home Goods and American Flags, along with donations for the Troops and local food pantries.

This year it was held for the first time with the Acuity Scheduling system and it ran more smoothly than organizers ever dreamed. This made Will County's fourth event offered with appointments required. All have received positive feedback from the public.

Will County has two more HHW & Electronics Collection Events planned for the Fall, as well as an Electronics Only event and a Pumpkin Catapult event with Document Shredding. The County's School Earth Flag program is running at full steam, with two high schools testing food scrap composting.

In addition, they are holding their first GreenTown event on October 26, in conjunction with the City of Joliet and several colleges. For more information on any of our efforts, please see their website WillCountyGreen.com or [Facebook](#) page.

INDUSTRY NEWS

RETHINKING RECYCLING REPORT

The National League of Cities released a new report, "[Rethinking Recycling: How Cities Can Adapt to Evolving Markets](#)," which analyzes how city leaders can develop resilient local waste management systems in response to China's stringent new regulations. The report, which marks the beginning of a larger effort to examine sustainability in solid waste management, is the first piece of literature to highlight how municipalities can effectively respond to – and benefit from – China's upcoming ban.

Long-term recommendations for city leaders from the report include:

1. Conducting an economic analysis of your current management operations.
2. Working with contractors.
3. Ensuring fees and rates reflect current costs.

4. Evaluating local policies and economic incentives.
 5. Exploring local and unconventional markets.
 6. Considering streams.
- Examining asset ownership and considering infrastructure investments.

USDA ADDRESSES FOOD WASTE

U.S. Secretary of Agriculture Sonny Perdue hosted a [food waste roundtable](#) with US Representatives, food industry leaders and others at the USDA on May 8. This roundtable, the first of many planned USDA events on food waste, served as an opportunity to raise awareness while allowing leaders throughout the food supply chain to discuss solutions.

INDUSTRY NEWS continued

MUNICIPAL CONTRACT GUIDANCE

The National Waste and Recycling Association (NWRA) and the Solid Waste Association of North America (SWANA) recently reissued their [Joint Advisory on Designing Contracts for Processing of Municipal Recyclables](#), which is now updated to include a preface about how China's waste import restrictions have affected the market for recyclable materials.

The reissued document reflects the need for North American recycling programs and providers to re-examine their current practices and investigate new processing systems, implement contamination reduction methods, and revise program guidelines for acceptable materials.

To guide solid waste and recycling professionals on protocols and standards regarding contracting for the processing of municipal recyclables, the updated report is available for public download to ensure information on best practices is available throughout the industry.

SWANA and NWRA have partnered on many initiatives to respond to the current market disruption in the wake of China's waste import restrictions, including advocacy for recycling funding in Congress' Infrastructure Bill and meetings with key organizations and non-profits to identify industry opportunities.

USEPA ANNOUNCES CLEANUP OF RADIOACTIVE WASTE AT LANDFILL

USEPA announced in late September its plans for [cleanup of radioactive material](#) at the West Lake Landfill Superfund site in Bridgeton, Missouri, near St. Louis. The material was generated during work on the Manhattan Project during WWII. It was placed at the landfill in 1973 as part of 39,000

tons of soil mixed with 8,700 tons of radioactive material.

Members of the community have long-been concerned about the material, and have pressured local, state and federal officials on the matter.

The project is estimated to take three years and cost \$205 million. The US Department of Energy and two private companies -- Cotter Corp. and Bridgeton Landfill -- are responsible for paying the costs of the cleanup and EPA oversight.

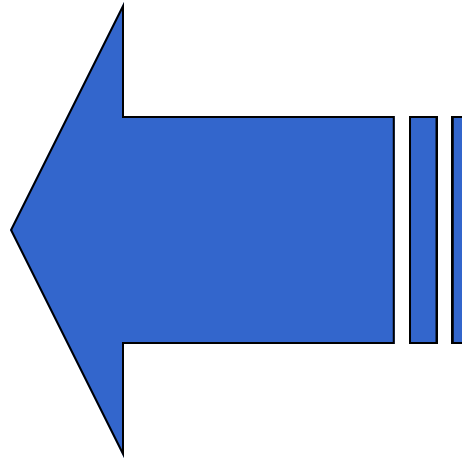
IEPA HOLDING FALL HHW EVENTS

IEPA recently announced the Agency has scheduled household hazardous waste collections for the fall 2018. Illinois EPA household hazardous waste collections are held to encourage residents to safely dispose of unused or leftover household products commonly found in homes. Details for additional fall collections are currently being finalized and will be announced at a later date.

Fall 2018 one-day collections are scheduled for:

- September 15 **Princeton**, Bureau County Farm Bureau, 535 Elm Place, Bureau County
- September 29 **Danville**, Danville Area Community College, 2000 East Mail St., Vermilion County
- October 6 **Vandalia**, Fayette County Health Dept., 509 West Edwards St., Fayette County
- October 13 **Oswego**, Park and Ride Parking Lot, Station Rd. (North of Mill Rd.), Kendall County
- October 27 **Decatur**, Progress City USA, E. Mound Road, Macon County ***Decatur event only: Participants must pre-register at www.MaconGreen.com.**

One-day collections are open to all Illinois residents and operate from 8:00 a.m. to 3:00 p.m. on the above scheduled Saturdays.



26th Annual Conference

November 1 & 2, 2018
Starved Rock Lodge

Conference highlights include:

- Keynote Address from Corinne Rico, Sustainability & Resilience expert
- Great conference sessions aligned on three different tracts:
 - Technical/Sustainability
 - Education/Recycling
 - Enforcement
- Network with your peers from around the State
- Speak with sponsoring vendors about their products and services

*ILCSWMA: Supporting Sound Solid Waste Management
Choices by Illinois Communities*

26th Annual Conference Agenda

Thursday, Nov. 1st



8:00 - 8:45 am BREAKFAST

8:00 am REGISTRATION BEGINS

9:00 am OPENING REMARKS &
KEYNOTE ADDRESS

Welcoming Remarks — Marlin Hartman, President

Keynote Address — “Chinese National Sword and Its Effects on the US Recycling Industry & Local Programs”, Corinne Rico, GBB Solid Waste Consultants

10:00 am BREAK / MOVE TO NEXT SESSION

10:10 am CONCURRENT SESSIONS

Ed/Recyc: Combined with Tech/Sust

Tech/Sust: “Closed Loop Circular Economy”, Corinne Rico, GBB

Enforcement: Landscape Waste and Food Scrap Compost Sites, Derek Rompot, IEPA

11:00 am BREAK

Sponsored by Solid Waste Agency of Lake County

11:15 am CONCURRENT SESSIONS

Ed/Recyc: “School Waste Audits—Designing Better Lunch Programs”, Joan O’Keefe, Will County

Tech/Sust: “Getting the Most Out of Municipal Waste & Recycling” & “Waste System Redesign at the Field Museum—Using a Design Research Approach to Improving Waste Diversion”, Martin Brown & Megan Walton, Delta Institute

Enforcement: “Why Become a Delegated County?”, IEPA representative

12:15 pm LUNCH

Sponsored by Millennium Waste Inc.

1:30 pm CONCURRENT SESSIONS

Ed/Recyc: “Marketing to the Public”, Eve Drueke, Madison County

Tech/Sust: “Illinois Food Scrap Coalition on the Scene—Update on Composting in Illinois”, Jen Jarland, Benjamin Krumstok, Stephanie Katsaros, & Walter Willis

Enforcement: “Communication Tips for Delegated Inspectors”, IEPA representative

2:30 pm BREAK

Sponsored by Steel Recycling Institute



Photos from 25 Years of Annual Conferences

Thu., Nov. 1st – continued

2:45 pm CONCURRENT SESSIONS

Ed/Recyc: “Using Media to Enlighten, Enhance & Entertain”, Mary Allen, SWANCC

Tech/Sust: Presentations from ILCSWMA 2018 Mini-Grant Recipients

Enforcement: “Stop the Bleed Training”, Troy Erbentraut, Central Illinois Coalition Active in Response Planning

4:00 pm On your own — Relax! Take a hike!

6:00 pm DINNER & AWARDS

PRESENTATION

Sponsored by Heritage Environmental

7:30 pm SOCIAL EVENT

TBA

Also, at this time there will be other drinks available, *courtesy of Lakeshore Recycling Services*. Drink tickets provided upon conference check-in.

The online conference agenda will be updated as needed as the event draws closer.

SWANA CEUs will also be available to attendees.

Friday, November 2nd

8:00 - 9:00 am BREAKFAST BUFFET

8:30 am REGISTRATION RE-OPENS

9:00 am CONCURRENT SESSIONS

Ed/Recyc: “Educator Roundtable”

Tech/Sust: “Electronic Recycling in the United States—Major Challenges” - Jason Linnell, National Center for Electronic Recycling

Enforcement: “How to Handle Scrapyards”, IEPA representative

10:00 am BREAK

Sponsored by Kuusakoski / Vintage Tech

10:15 am PLENARY SESSION

“CERA Electronics Panel Discussion”

Jason Linnell, NCER; Andriana Kontovrakis, RLG; Tricia Conroy, MRM; Steve Pfeiffer, URT; Lisa Kneller, LG; Larry King, SIMS; ERI representative; IEPA representative

11:30 am PLENARY CLOSING SESSION

Closing Remarks— Marlin Hartman, President

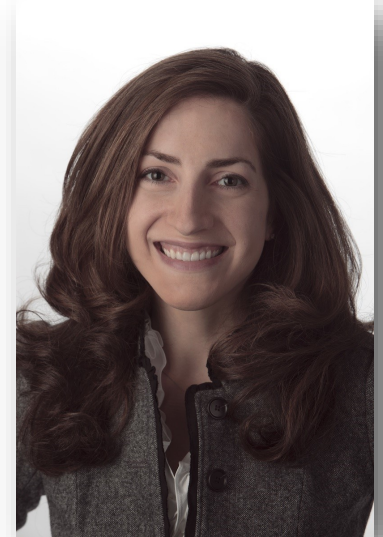
11:45 am ADJOURN



Keynote Address from Corinne Rico

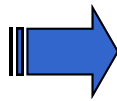
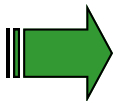
Corinne Rico is a Community Sustainability and Resilience Specialist who works with communities of all types and sizes to help them plan for future uncertainties and shocks, such as resource depletion, climate change, and widening socioeconomic gaps. Corinne believes that communities can prepare for these uncertainties in ways that are environmentally responsible and that foster a sustainable future for all.

Corinne has held fellowships at the National League of Cities in their Sustainable Cities Institute and at the NoMa Parks Foundation in Washington, DC. At the National League of Cities, her research centers on municipal recycling and waste streams, particularly in light of current market conditions and future uncertainties. Corinne is additionally exploring how local governments can use waste diversion policy to encourage local circular economies. At the NoMa Parks Foundation, Corinne works to advance equitable and sustainable park and open space development within a quickly urbanizing mixed-use neighborhood. Corinne has a background in interior architecture, and her focus on sustainable design and human-environment interaction guided the expansion of her work to focus on community-scale sustainable development.



Corinne holds a BS in Design and Environmental Analysis from Cornell University, and is currently completing her thesis for an MS in Resilient and Sustainable Communities from Green Mountain College.

Conference Sponsors



Steel Recycling Institute



**A big thanks to this year's
conference sponsors!**

[Heritage Environmental Services](#)

[Solid Waste Agency of Lake County](#)

[Millennium Waste, Inc.](#)

[LAKESHORE Recycling Systems](#)

[Kuusakoski/Vintage Tech](#)

[Steel Recycling Institute](#)

Conference Location

Starved Rock Lodge is located within [Starved Rock State Park](#), Utica, Illinois. This facility has hosted a number of our Annual Conferences, and has proven to be a favorite of our members. The vibrant, fall colors and cool, autumn air will greet conference participants upon arrival.



The Park is located along the Illinois River in LaSalle County, with easy access from I-80 and I-39. Hiking trails abound. The lodge is made of native stone

and the Great Hall features a beamed ceiling and giant fireplace. The lodge also features an indoor pool.

Lodging reservations can be made now through October 2nd by calling 1-800-868-7625. The rate is only \$70/night + tax for single occupancy, \$80/night + tax for double occupancy, \$90/night + tax for triple and \$100/night + tax for quad. Identify yourself as being with the Illinois Counties Solid Waste Management room block.

Registration Rates

Full Conference (Rcvd on or before 10/25)

- Member \$125
- Non-Member \$225
- Student \$40

(After 10/25/18, add \$25 to member & non-member price; student remains same)

Thursday Only (Rcvd on or before 10/25)

- Member \$80
- Non-Member \$180
- Student \$30

(After 10/25/18, add \$25 to member & non-member rate; student remains same)

Friday Only (Rcvd on or before 10/25)

- Member \$50
- Non-Member \$150
- Student \$10

(After 10/25/18, add \$15 to member & non-member rate; student remains same)

Register at www.ilcswma.org/conference.

Payment by check or credit card available.

Note: All non-member registration rates include membership through the end of 2019.



Miscellaneous

WEDNESDAY NIGHT GATHERING

The night before the conference starts, join us starting at 7pm at the Back Door Lounge for the ILCSWMA Halloween Party—Costumes on the Rock! Come dressed in your favorite costume and have some fun! There will be prizes awarded for 1st, 2nd & 3rd. Food and beverages will be on your own.

SHOW OFF YOUR WORK!

Bring copies of literature published by your office to share with other attendees. A table will be provided so that those interested can grab a copy of the great work you have done.

SOCIAL EVENT

Thursday, after dinner and the awards ceremony,.

Also, at this time there will be other drinks available, courtesy of our sponsors. Drink tickets provided upon conference check-in.